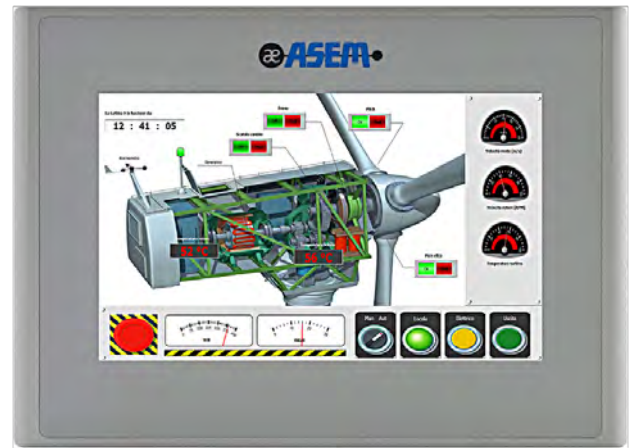


HMI 30

The HMI30 family is based on a 1 GHz ARM Cortex A8 processor and the visualization software Premium HMI 4. Available with 16 million colors TFT LCDs from 5.7" up to 15" in 4:3 and 16:9 aspect ratios, with aluminum or true flat aluminum front panel.

HMI30 integrates ASEM Ubiquity, the innovative remote assistance software solution.



Aluminum True Flat Front



Aluminum Front



ARM-A8	512MB	5,7" 7"W	8,4"	10,4"	12,1"	15"
Alu	Alu TF	Res 4	Res 5	24VDC	WE C7	

Enclosure type 4X (INDOOR use only)

FEATURES PLUS

- ✓ CPU ARM CORT EX A8
- ✓ WINDOWS EMB EDDED COMPACT 7 PRO
- ✓ ASEM UBIQUITY INT EG RAT ED - SOFT WARE SOLUTION FOR R EMOT E ASSISTANC E
- ✓ MPI PROTOCOL SUPPORT 187K BIT /S (SIEMENS S7-300/S7-400)
- ✓ 2GB MM C (SSD) FOR DATA STORAGE
- ✓ EXTERNAL R EMOVABL E SD
- ✓ PR EMIUM HMI 4 HI GH LIGHTS:
 - WEB SERVER INTEGRATED
 - DATALOGGER ON XML DB AND SQL S ERVER FOR WINDOWS WIN 32
 - CFR21 P ART 11 COMPATIBLE PROJECTS
 - EAS y CONNECTIVIT y AND DATA EXCHANGE WITH DEVICES CONNECTED OVER ETHERNET NETWORK
 - HIGH -LEVEL VECTOR GRAPHICS
 - HISTORICAL AND DyNAMIC TRENDS
 - WIDE RANGE OF COMMUNICATION DRIVERS FOR THE MOST IMPORTANT PLC S, INVERTERS AND TEMPERATUR E CONTROLL ERS
- ✓ INT EG RAT ES MICRO-UPS FOR SHORT PO WER SUPPLY INT ERUPTIONS AND AUTOMATIC BACK-UP PROC ESS
- ✓ 2 X ETHERNET , 1 X SERIAL , 2 X USB

HMI SOLUTIONS

System software characteristics

Integrated system software	Operating System HMI Remote control	Windows Embedded Compact 7 PRO (C7P) Premium HMI 4 runtimes (BASIC, ADVANCED versions) ASEM Ubiquity runtime (PRO-Eth version)	
Premium HMI 4	I/O Bytes (Tags) Alarms Data Loggers on SQL db for CE Multi-Drivers SMS/E-mails Web Server	BASIC 1.024 512 Max 2 Max 2 No No	ADVANCED 4.096 2.048 Unlimited Max 4 Yes Max 2 client simultaneously

System Hardware characteristics

	System Size	HMI25 4.3"	HMI30 5.7"	HMI25 / HMI30 7" W	HMI30 8.4"	HMI30 10.4"	HMI30 12.1"	HMI30 15"
	Type	Color LCD TFT	Color LCD TFT	Color LCD TFT	Color LCD TFT	Color LCD TFT	Color LCD TFT	Color LCD TFT
	Resolution	480x272	640x480 VGA	800x480WVGA	800x600 SVGA	800x600 SVGA	800x600 SVGA	1024x768SXGA
	Colors	16M	16M	256k	16M	16M	256k	16M
	Backlight	LED	LED	LED	LED	LED	LED	LED
	Luminance	400 cd/m ²	500 cd/m ²	350	250	400	450	400
	Contrast	250:1	250:1	400:1	600:1	700:1	800:1	800:1
	Viewing angle L:R/U:L (typ.)	70°:70°/55°:35	140°/100°	70°:70°/70°:60°	75°:75°/60°:70°	80°:80°/60°:80°	80°:80°/60°:80°	80°:80°/65°:80°
	Lifetime (min.)	50.000h	40.000h	20.000h	20.000h	50.000h	50.000h	50.000h
Touchscreen	Technology HM25 / HMI30 HMI25-TF / HMI30-TF	4 wires – analog - resistive Overlaminated with OCA (Optical Clear Adhesive)			5 wires – analog resistive			
Motherboard	Model RTC Watch-dog Buzzer	HMI25 / HMI25-TF All-in-one, ASEM R132 Hardware with battery Time programmable Yes			HMI30 / HMI30-TF All-in-one, ASEM R131 Hardware with battery Time programmable Yes			
CPU	Processor Memory bus	ARM Cortex A8 – 1 GHz 400MHz						
Graphic	Controller	GPU with integrated LCD controller						
System memory	Type / Size / Socket	512 MB, DDR3-800 / Soldered						
Serial interfaces	Type Optoisolation	1 x RS232/422/485 (DB15M) software selectable No						
Ethernet interfaces	Type	HMI25 / HMI25-TF 1 x 10/100Mbps (RJ45) with Link/Activity led			HMI30 / HMI30-TF 2 x 10/100Mbps (RJ45) with Link/Activity led			
USB interfaces	Type	HMI25 / HMI25-TF 1 x USB 2.0 (rear, TYPE-A, host port, single channel software switch off)			HMI30 / HMI30-TF 2 x USB 2.0 (rear, TYPE-A, host port, single channel software switch off)			
Mass storage	Internal / not removable	NAND-FLASH: - 256 MB (Read Only) for O.S. eMMC 2 GB - 8 bit v. 4.4 compatible (File System organization)						
	External Access / Removable	Only for HMI30: SD/SDHC card slot V. 2.0 (push-push type)						
Battery	Type Lifetime	Coin (CR2032 3V) removable 3 years						
Buttons, leds and keys	Reset buttons LEDs	System Power / Removable Storage activity						

Electrical characteristics

Power supply	Type Input voltage Protections Power consumption µUPS (optional for HMI30)	Integrated on board, auto ranging 18÷36 VDC with 3 poles connector Anti-inversion polarity, over-voltage, fuse 5.8W@5.7" / 6.7W@7.0" / 7.0W@8.4" / 9.0W @10.4" / 14.0W @12.1" / 15.5W @15.0" 300-500ms, with interrupt data safe						
--------------	--	--	--	--	--	--	--	--

Mechanical characteristics

Case	Type Material	Panel mount Steel, zinc galvanization			
Front panel	Protection Construction Color	HMI25 / HMI30 IP66, Enclosure type 4X (Indoor use only) Full Aluminium alloy -		HMI25-TF / HMI30-TF IP66, Enclosure type 4X (Indoor use only) Aluminium alloy True Flat frame with polyester foil PANTONE Cool Grey 4C	
Measurements mm		Aluminium (W x H x D)	True Flat Alu (W x H x D)	Cutout (W x H)	Weight (Kg)
	4,3"	140 x 95 x 30	140 x 95 x 30	131 x 86	0,7
	5,7"	175 x 145 x 40	175 x 145 x 40	164 x 134	0,9
	7"W	215 x 155 x 40	215 x 155 x 40	204 x 144	1,2
	8,4"	255 x 190 x 48.5	255 x 190 x 48.5	243 x 179	1,4
	10,4"	295 x 230 x 48.5	295 x 230 x 48.5	283 x 219	1,8
	12,1"	325 x 260 x 48.5	325 x 260 x 48.5	313 x 249	2,1
	15"	390 x 305 x 48.5	390 x 305 x 48.5	378 x 294	3,3

Environmental characteristics

Temperature	Operation Storage	0° ÷ +50°C -20° ÷ +60°C
Humidity	Operation/Storage	80% (non-condensing)

Warranty & Approvals

UL	Marks Safety Certificate N°	 Conforms to UL-508 (1 UL - Standard for Industrial Control Equipment) E356364
CE	Emission Immunity Safety	Conforms to EN 55022 Information technology equipment – Radio disturbance characteristics Conforms to EN 61000-3-2 – Limits for harmonic current emissions Conforms to EN 61000-3-3 – Limits of voltage fluctuation and flicker Conforms to EN 55024 Information technology equipment – Immunity characteristics Conforms to EN 60950-1 – Information technology equipment – Safety
Warranty	Management Standard Extended	By ASEM headquarters 12 months 18 / 24 / 36 months (optional)